



TYRES
Mitas

BICYCLE TYRES & TUBES 2021



EUROPEAN ROOTS, WORLDWIDE EXPANSION



TYRES
Mitas

Mitas, part of the Trelleborg Group

Mitas, part of the Trelleborg Group, is one of Europe's leading producers of tyres for agricultural machines, construction vehicles, motorcycles, bicycles and other speciality segments. The company tradition in the rubber industry dates back to 1908. With demand for bicycles and parts reaching record highs this year we have increased production to keep our customers stocked up and riders moving.

From elite level mountain bikers to hard riding city commuters and casual enthusiasts we offer a huge range of tyres and tubes, all made in Europe's largest dedicated factory and available for rapid shipping to retail outlets and wholesalers everywhere.

The quality and reliability are the moving force for Mitas brand.

TYRES BY SIZE 03-04

MTB 05-20

ROAD & GRAVEL 21-28

CITY & TREKKING 29-38

ICE & SNOW 39-40

TYRES COMPOUNDS 41

TYRES TECHNOLOGY 42

TYRES CONSTRUCTION 43-44

TUBES 45

GAADI TUBES 46

SAFETY & INFLATING 47

ACCESSORIES 48

NOTES 49

TYRES BY SIZE

Nominal Diameter (mm)	ETRTO	Alternative size	Pattern Name	Category	Page
152	47-152	10 x 1,75 x 2	WALRUS	CITY/TREKKING	38
			X-CALIBER	MTB	19
203	47-203	12 1/2 x 1,75 x 2 1/4	WALRUS	CITY/TREKKING	38
			RAPID	MTB	19
254	47-254	14 x 1,75 x 2	WINNER	MTB	19
			X-CALIBER	MTB	19
305	47-305	16 x 1,75 x 2	WINNER	MTB	19
			WALRUS	CITY/TREKKING	38
			RAPID	MTB	19
	54-305	16 x 2,10	CHEETAH	MTB	15
			OCELOT	MTB	16
355	47-355	18 x 1,75 x 2	WINNER	MTB	19
			WALRUS	CITY/TREKKING	38
406	40-406	20 x 1,50	COBRA	CITY/TREKKING	38
			RAPID	MTB	19
	47-406	20 x 1,75 x 2	SHIELD	CITY/TREKKING	36
			WALRUS	CITY/TREKKING	38
			FLASH	CITY/TREKKING	33-34
	50-406	20 x 1,90	WINNER	MTB	19
			SCYLLA	MTB	18
	52-406	20 x 2,00	NITRO	BMX	20
			ZIRRA R	BMX	20
	54-406	20 x 2,10	CHEETAH	MTB	15
OCELOT			MTB	16	
ZIRRA F			BMX	20	
57-406	20 x 2,25	RAPID	MTB	19	
		SHIELD	CITY/TREKKING	36	
507	47-507	24 x 1,75 x 2	WALRUS	CITY/TREKKING	38
			FROSTER JP (100 studs)	ICE & SNOW	40
			DART	MTB	18
			WINNER	MTB	19
			SCYLLA	MTB	18
	50-507	24 x 1,90	FLASH	CITY/TREKKING	33-34

Nominal Diameter (mm)	ETRTO	Alternative size	Pattern Name	Category	Page
507	54-507	24 x 2,10	CHEETAH	MTB	15
			OCELOT	MTB	16
559	40-559	26 x 1,50	SHIELD	CITY/TREKKING	36
			SYRINX	CITY/TREKKING	37
			FLASH	CITY/TREKKING	33-34
			FROSTER (240 studs)	ICE & SNOW	40
	47-559	26 x 1,75 x 2	FROSTER (120 studs)	ICE & SNOW	40
			SHIELD	CITY/TREKKING	36
			SEPIA	CITY/TREKKING	37
			WALRUS	CITY/TREKKING	38
			FLASH	CITY/TREKKING	33-34
			SAURUS	MTB	18
559	50-559	26 x 1,90	ACRIS	MTB	19
			DART	MTB	18
			BLADE	MTB	17
			WINNER	MTB	19
			COBRA	CITY/TREKKING	38
	52-559	26 x 2,00	RAPID	MTB	19
			CHARYBDIS	MTB	17
	54-559	26 x 2,10	CHEETAH	MTB	15
			OCELOT	MTB	16
	57-559	26 x 2,25	SCYLLA	MTB	18
TRITON			MTB	18	
CHARYBDIS			MTB	17	
CITYHOPPER			CITY/TREKKING	32	
SCYLLA			MTB	10	
60-559	26 x 2,35	DEFENDER	MTB	17	
		HOOK	CITY/TREKKING	35	
584	40-584	26 x 1 1/2	HYPERION	MTB	11
			OCELOT	MTB	16
	54-584	27,5 x 2,10	CHEETAH	MTB	15
			TOMCAT	MTB	17

Nominal Diameter (mm)	ETRTO	Alternative size	Pattern Name	Category	Page
584	57-584	27,5 x 2,25	KRATOS	MTB	12
			SCYLLA	MTB	10
			ZEFYROS	MTB	9
			CHEETAH	MTB	15
	60-584	27,5 x 2,35	OCELOT	MTB	16
			MONARCH	MTB	13
			HIGHLANDER	MTB	14
			KRATOS	MTB	12
			SCYLLA	MTB	10
			KRATOS	MTB	12
590	37-590	26 x 1 3/8	MONARCH	MTB	13
			SCYLLA	MTB	10
	23-622	700 x 23C	HOOK	CITY/TREKKING	35
			FLASH	CITY/TREKKING	33-34
			SYRINX	ROAD	24
			SYRINX	ROAD	24
			ARROW	ROAD	23
			FLASH	CITY/TREKKING	33-34
			ARROW	ROAD	23
			HOOK	CITY/TREKKING	35
622	32-622	28 x 1 1/4 x 1 3/4 (700 x 32C)	FLASH	CITY/TREKKING	33-34
			X - SWAMP	GRAVEL	27
	33-622	700 x 33C	X - FIELD	GRAVEL	26
			X - ROAD	GRAVEL	25
	35-622	700 x 35C	GRIPPER	GRAVEL	28
			HOOK	CITY/TREKKING	35
	37-622	700 x 35C	FLASH	CITY/TREKKING	33-34
			FLIPPER	CITY/TREKKING	38
			ELECTRON	CITY/TREKKING	31
			X - ROAD	GRAVEL	25
CHEETAH			GRAVEL	28	
OCELOT			GRAVEL	28	
SHIELD			CITY/TREKKING	36	
LANDMARK			CITY/TREKKING	37	

Nominal Diameter (mm)	ETRTO	Alternative size	Pattern Name	Category	Page
622	42-622	700 x 40C	GRIPPER ICE	ICE & SNOW	40
			HOOK	CITY/TREKKING	35
			FLASH	CITY/TREKKING	33-34
			SEPIA	CITY/TREKKING	37
			GRIPPER	CITY/TREKKING	37
	47-622	28 x 1,75 x 2 (700 x 45C)	X - ROAD	GRAVEL	25
			FLASH	CITY/TREKKING	33-34
			WALRUS	CITY/TREKKING	38
			ELECTRON	CITY/TREKKING	31
			CITYHOPPER	CITY/TREKKING	32
	52-622	28 x 2,00	HYPERION	MTB	11
			OCELOT	MTB	16
			CHEETAH	MTB	15
			TOMCAT	MTB	17
			KRATOS	MTB	12
54-622	29 x 2,10	SCYLLA	MTB	10	
		ZEFYROS	MTB	9	
		CHEETAH	MTB	15	
		OCELOT	MTB	16	
		HIGHLANDER	MTB	14	
57-622	29 x 2,25	KRATOS	MTB	12	
		SCYLLA	MTB	10	
		ZEFYROS	MTB	9	
		CHEETAH	MTB	15	
		OCELOT	MTB	16	
60-622	29 x 2,35	MONARCH	MTB	13	
		SCYLLA	MTB	10	
		KRATOS	MTB	12	
		MONARCH	MTB	13	
		SCYLLA	MTB	10	
62-622	29 x 2,45	KRATOS	MTB	12	
		MONARCH	MTB	13	
		SCYLLA	MTB	10	
		KRATOS	MTB	12	
		MONARCH	MTB	13	
630	32-630	27 x 1 1/4	SCYLLA	MTB	10
			HOOK	CITY/TREKKING	35
635	40-635	28 x 1 1/2	HOOK	CITY/TREKKING	35
			MISTRAL	CITY/TREKKING	38

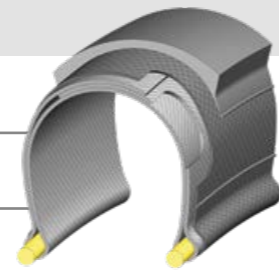


MTB



MTB

SPECIAL TECHNOLOGY



TEXTRA

An extremely durable rubberized fabric with high-density polymer threads, protecting the carcass of tyres. Its excellent elasticity characteristics together with light weight maintain outstanding riding properties of our Elite level tyres. This technology ultimately increases resistance against cuts and abrasion to provide both superior reliability and high performance.



E-BIKE READY

Tyres which are recommended for E-bikes where the emphasis is placed on the ideal balance among safety, rolling resistance and durability.

CONSTRUCTION



DH SUPRA MAX

Tubeless specification with increased carcass resistance, Optimized Grip, stable riding in difficult terrain even at lower pressure. Extreme protection against „Snake Bite“ and sidewall punctures and enhanced puncture resistance of tyre crown.

OVERVIEW

FAST

INTERMEDIATE

AGGRESSIVE

ELITE



STANDARD



MTB

ridemitas.com





ZEFYROS ELITE

FAST XC



Advanced design for even better handling and faster riding in easy rigid terrain. Higher side-knobs bring more traction and confidence in corners thus making the tyre more versatile without losing anything from its original merits.

Tyre name	Performance level	ETRTO	Alternative size	Construction	TPI	Thread compound	Technology	Inflating (kPa)	Load (kg)	Weight (g)	Mitas code
MTB – ELITE											
ZEFYROS	Elite	57-622	29 x 2,25	TUBELESS SUPRA	127	CRX		380	144	660	5-10952755
ZEFYROS	Elite	57-584	27,5 x 2,25	TUBELESS SUPRA	127	CRX		380	136	610	5-10952740



SCYLLA ELITE

XC ALL-ROUNDER



SCYLLA is our most versatile tyre for a broad range of MTB ride. The new tread profile is designed to offer advanced XC performance but also more aggressive trail capabilities. The fast tread pattern in combination with optimal side knobs positioning for plenty of cornering grip makes SCYLLA the best choice for you. It is also the choice of most of our riders on the elite world circuit, thanks to low rolling resistance and impressive traction, for both great acceleration and braking in any track conditions.

Tyre name	Performance level	ETRTO	Alternative size	Construction	TPI	Thread compound	Technology	Inflating (kPa)	Load (kg)	Weight (g)	Mitas code
MTB – ELITE											
SCYLLA NEW	Elite	66-622	29 x 2,60	TUBELESS SUPRA	127	CRX-Dual		330	136	1160	5-10967396
SCYLLA NEW	Elite	62-622	29 x 2,45	TUBELESS SUPRA	127	CRX-Dual		350	140	1080	5-10967397
SCYLLA NEW	Elite	57-622	29 x 2,25	TUBELESS SUPRA	127	CRX-Dual		380	144	740	5-10967359
SCYLLA NEW	Elite	66-584	27,5 x 2,60	TUBELESS SUPRA	127	CRX-Dual		330	140	1130	5-10967398
SCYLLA NEW	Elite	62-584	27,5 x 2,45	TUBELESS SUPRA	127	CRX-Dual		350	140	1050	5-10967412
SCYLLA	Elite	57-584	27,5 x 2,25	TUBELESS SUPRA	127	CRX		380	136	620	5-10952738
SCYLLA	Elite	57-559	26 x 2,25	TUBELESS SUPRA	127	CRX		380	131	550	5-10952363

COMING





HYPERION ELITE

WET OR SOFT TERRAIN



HYPERION is a slightly deeper pattern design for additional grip in wet or soft terrain, extended forward plate for better cornering stability, and three direction grooves on knobs for increased riding confidence on obstacles. All this translates into better performance in muddy conditions.

Tyre name	Performance level	ETRTO	Alternative size	Construction	TPI	Thread compound	Technology	Inflating (kPa)	Load (kg)	Weight (g)	Mitas code
MTB – ELITE											
HYPERION	Elite	54-622	29 x 2,10	TUBELESS SUPRA	127	CRX		380	133	650	5-10967261
HYPERION	Elite	54-584	27,5 x 2,10	TUBELESS SUPRA	127	CRX		380	126	610	5-10967260



KRATOS ELITE

INTERMEDIATE TRAIL



KRATOS is the right choice for rough and hard terrain. More aggressive profile with excellent traction and better control of the bike. The double compound brings even better grip and superb handling in sharp corners. KRATOS is a combination of traction, all-round stability, effective braking properties and low rolling resistance in its class, making it an ideal choice for trail exploration and rough terrain.

Tyre name	Performance level	ETRTO	Alternative size	Construction	TPI	Thread compound	Technology	Inflating (kPa)	Load (kg)	Weight (g)	Mitas code
MTB – ELITE											
KRATOS NEW	Elite	66-622	29 x 2,60	TUBELESS SUPRA	127	EDC-dual compound		330	136	1160	5-10967277
KRATOS	Elite	62-622	29 x 2,45	TUBELESS SUPRA	127	EDC-dual compound		350	140	930	5-10967351
KRATOS NEW	Elite	66-584	27,5 x 2,60	TUBELESS SUPRA	127	EDC-dual compound		330	140	1030	5-10967384
KRATOS	Elite	62-584	27,5 x 2,45	TUBELESS SUPRA	127	EDC-dual compound		350	144	1210	5-10967344
KRATOS	Elite	62-584	27,5 x 2,45	TUBELESS SUPRA	127	EDC-dual compound		350	144	880	5-10967343
KRATOS	Elite	57-622	29 x 2,25	TUBELESS SUPRA	127	CRX		380	144	760	5-10952737
KRATOS	Elite	57-584	27,5 x 2,25	TUBELESS SUPRA	127	CRX		380	136	710	5-10952739



MTB ELITE

ridemitas.com

12



MONARCH ELITE

ENDURO / GRAVITY,
ALL TRACKS CONDITIONS



THE MOST GRAVITY ORIENTED TYRE of Mitas range developed in collaboration with Mitas Enduro athletes. Perfect all-round performance for all tracks and conditions. The advanced intermediate profile is combined with enduro dual compounds and Downhill Supra Max construction. Aggressive shoulder knobs, with optimal spaced tread design provide maximum braking, traction and cornering grip. The ground-contact grooves inspired by our winter tyres provide the best level of grip over any track conditions. Mitas MONARCH, the ride has no limit.

Tyre name	Performance level	ETRTO	Alternative size	Construction	TPI	Thread compound	Technology	Inflating (kPa)	Load (kg)	Weight (g)	Mitas code
MTB – ELITE											
MONARCH NEW	Elite	66-622	29 x 2,60		127	EDC-dual compound		330	136	1390	5-10967393
MONARCH NEW	Elite	62-622	29 x 2,45		127	EDC-dual compound		350	140	1160	5-10967395
MONARCH NEW	Elite	66-584	27,5 x 2,60		127	EDC-dual compound		330	140	1250	5-10967394
MONARCH NEW	Elite	62-584	27,5 x 2,45		127	EDC-dual compound		350	144	1020	5-10967413

COMING



HIGHLANDER ELITE

AGGRESSIVE ENDURO / GRAVITY



This tyre is a perfect match for dry and hard-packed terrains. Optimally designed tread pattern allows not only driving in difficult terrain but also ensures great performance in climbing and downhill sections on both mountain bike and eMTB.

Tyre name	Performance level	ETRTO	Alternative size	Construction	TPI	Thread compound	Technology	Inflating (kPa)	Load (kg)	Weight (g)	Mitas code
MTB – ELITE											
HIGHLANDER	Elite	62-622	29 x 2,45		127	EDC-dual compound		350	140	1290	5-10967346
HIGHLANDER	Elite	62-584	27,5 x 2,45		127	EDC-dual compound		350	144	1210	5-10967345

PACKAGING
OF FOLDING
TYRES





CHEETAH

RUGGED TERRAIN WITH HARD GROUND

CHEETAH is a favourite choice for those who enjoy riding on rugged terrain with the hard ground. Even for gravel or travel adventure, CHEETAH is capable to bring you everywhere with a wide smile.

Tyre name	Performance level	ETRTO	Alternative size	Construction	TPI	Thread compound	Technology	Inflating (kPa)	Load (kg)	Weight (g)	Mitas code	
MTB – STANDARD												
CHEETAH NEW	Standard	60-622	29 x 2,35	Classic	22	BC		350	140	1110	5-10967373	
CHEETAH	Standard	54-622	29 x 2,10	Classic	22	BC		380	128	1000	5-10952486	
CHEETAH NEW	Standard	60-584	27,5 x 2,35	Classic	22	BC		350	130	1040	5-10967374	
CHEETAH	Standard	54-584	27,5 x 2,10	Classic	22	BC		380	120	940	5-10951744	
CHEETAH NEW	Standard	54-559	26 x 2,10	Classic	22	BC		380	116	900	5-10967375	
CHEETAH NEW	Standard	54-507	24 x 2,10	Classic	22	BC		380	106	820	5-10967376	KIDS
CHEETAH NEW	Standard	54-406	20 x 2,10	Classic	22	BC		380	87	660	5-10967377	KIDS
CHEETAH NEW	Standard	54-305	16 x 2,10	Classic	22	BC		380	68	540	5-10967378	KIDS



OCELOT

MEDIUM-HARD TERRAIN – HARD GROUND

OCELOT has an intermediate tread pattern and is a popular choice for those who enjoy riding on a medium-hard terrain with the hard ground. The tread geometry is designed for good self-cleaning under demanding conditions.

Tyre name	Performance level	ETRTO	Alternative size	Construction	TPI	Thread compound	Technology	Inflating (kPa)	Load (kg)	Weight (g)	Mitas code	
MTB – STANDARD												
OCELOT	Standard	60-622	29 x 2,35	Classic	22	BC		350	140	1110	5-10967324	
OCELOT	Standard	54-622	29 x 2,10	Classic	22	BC		380	128	1000	5-10952471	
OCELOT	Standard	60-584	27,5 x 2,35	Classic	22	BC		350	130	1040	5-10967323	
OCELOT	Standard	54-584	27,5 x 2,10	Classic	22	BC		380	120	940	5-10951725	
OCELOT	Standard	54-559	26 x 2,10	Classic	22	BC		380	116	900	5-10952468	
OCELOT	Standard	54-507	24 x 2,10	Classic	22	BC		380	106	820	5-10952732	KIDS
OCELOT	Standard	54-406	20 x 2,10	Classic	22	BC		380	87	660	5-10952495	KIDS
OCELOT	Standard	54-305	16 x 2,10	Classic	22	BC		380	68	540	5-10951854	KIDS



MTB
STANDARD





Tyre name	Performance level	ETRTO	Alternative size	Construction	TPI	Thread compound	Colour Thread/Sidewall	Inflating (kPa)	Load (kg)	Weight (g)	Mitas code
MTB – STANDARD											
TOMCAT	Standard	54-622	29 x 2,10	Classic	22	BC		380	128	1000	5-10952485
TOMCAT	Standard	54-584	27,5 x 2,10	Classic	22	BC		380	120	940	5-10951743
CHARYBDIS	Standard	57-559	26 x 2,25	Classic	22	BC		380	125	960	5-10952306
CHARYBDIS	Standard	52-559	26 x 2,00	Classic	22	BC		420	116	900	5-10952469
DEFENDER	Standard	60-559	26 x 2,35	Classic	22	BC		350	129	1000	5-10952339
BLADE	Standard	50-559	26 x 1,90	Classic	22	BC		450	126	740	5-10951173



Tyre name	Performance level	ETRTO	Alternative size	Construction	TPI	Thread compound	Colour Thread/Sidewall	Inflating (kPa)	Load (kg)	Weight (g)	Mitas code
MTB – STANDARD											
DART	Standard	50-559	26 x 1,90	Classic	22	BC		450	86	760	5-10952705
DART	Standard	50-507	24 x 1,90	Classic	22	BC		450	85	680	5-10952712
SAURUS	Standard	50-559	26 x 1,90	Classic	22	BC		450	114	770	5-10951266
TRITON	Standard	57-559	26 x 2,25	Classic	22	BC		380	125	980	5-10952316
SCYLLA	Standard	54-559	26 x 2,10	Classic	22	BC		380	116	900	5-10952271
SCYLLA	Standard	50-507	24 x 1,90	Classic	22	BC		450	104	790	5-10967238
SCYLLA	Standard	50-507	24 x 1,90	Classic	22	BC		450	104	840	5-10952412
SCYLLA	Standard	50-406	20 x 1,90	Classic	22	BC		450	85	660	5-10952420
SCYLLA	Standard	50-406	20 x 1,90	Classic	22	BC		450	85	620	5-10952413

KIDS
KIDS
KIDS
KIDS



MTB STANDARD





Tyre name	Performance level	ETRTO	Alternative size	Construction	TPI	Thread compound	Inflating (kPa)	Load (kg)	Weight (g)	Mitas code	
MTB – STANDARD											
ACRIS	Standard	50-559	26 x 1,90	Classic	22	BC	450	114	760	5-10951278	
WINNER	Standard	50-559	26 x 1,90	Classic	22	BC	280	86	750	5-10951154	
WINNER	Standard	50-507	24 x 1,90	Classic	22	BC	320	85	710	5-10952713	KIDS
WINNER	Standard	50-406	20 x 1,90	Classic	22	BC	320	70	570	5-10952711	KIDS
WINNER	Standard	47-355	18 x 1,75 x 2	Classic	22	BC	320	57	520	5-10951843	KIDS
WINNER	Standard	47-305	16 x 1,75 x 2	Classic	22	BC	320	50	470	5-10951852	KIDS
WINNER	Standard	47-254	14 x 1,75 x 2	Classic	22	BC	450	52	350	5-10951770	KIDS
RAPID	Standard	52-559	26 x 2,00	Classic	22	BC	420	116	800	5-10952707	
RAPID	Standard	47-507	24 x 1,75 x 2	Classic	22	BC	450	95	690	5-10952085	KIDS
RAPID	Standard	47-406	20 x 1,75 x 2	Classic	22	BC	450	78	590	5-10952716	KIDS
RAPID	Standard	47-305	16 x 1,75 x 2	Classic	22	BC	380	55	470	5-10951850	KIDS
RAPID	Standard	47-203	12 1/2 x 1,75 x 2 1/4	Classic	22	BC	250	30	360	5-10967340	KIDS
X-CALIBER	Standard	47-305	16 x 1,75 x 2	Classic	22	BC	450	67	450	5-10951837	KIDS
X-CALIBER	Standard	47-203	12 1/2 x 1,75 x 2 1/4	Classic	22	BC	450	47	320	5-10967334	KIDS



BMX

Tyre name	Performance level	ETRTO	Alternative size	Construction	TPI	Thread compound	Inflating (kPa)	Load (kg)	Weight (g)	Mitas code
BMX										
ZIRRA F	Standard	57-406	20 x 2,25	Classic	22	BC	380	97	720	5-10967348
ZIRRA R	Standard	54-406	20 x 2,10	Classic	22	BC	380	87	700	5-10967349
NITRO	Standard	52-406	20 x 2,00	Classic	22	BC	420	96	660	5-10952305



MTB
STANDARD/BMX





ROAD & GRAVEL

Mitas

ridemitas.com

22



ARROW ELITE

RACING PRO



The Mitas ARROW is a road tyre with TEXTRA technology, a high-density fabric that reinforces the entire carcass of the tyre. Excellent suppleness combined with low weight helps to increase durability and puncture resistance. The ARROW weighs only 250g and uses the excellent SMC (Silica Medium Compound) rubber, a special compound with activated silica. It is designed for competition use with high level performance in all conditions, including wet and low temperatures.

Tyre name	Performance level	ETRTO	Alternative size	Construction	TPI	Thread compound	Technology	Inflating (kPa)	Load (kg)	Weight (g)	Mitas code
ROAD – ELITE											
ARROW	Elite	28-622	700 x 28C	Racing Pro	127	SMC		700	78	290	5-10967297
ARROW	Elite	25-622	700 x 25C	Racing Pro	127	SMC		800	75	250	5-10967295
ARROW	Standard	28-622	700 x 28C	Classic	22	RC		700	78	450	5-10967381
ARROW	Standard	25-622	700 x 25C	Classic	22	RC		800	75	430	5-10967382



SYRINX ELITE

RACING PRO



SYRINX road tyre is made of a very dense and extremely stiff rubberized fabric placed around the entire bead of the tyre. It has excellent elasticity at almost negligible weight increases the durability of the tyre against puncture and abrasion. Made of SMC (Silica Medium Compound) It is designed for sporting use in all-round conditions. Its stable properties also allow the blend to excel for training in low-temperature conditions.

Tyre name	Performance level	ETRTO	Alternative size	Construction	TPI	Thread compound	Technology	Inflating (kPa)	Load (kg)	Weight (g)	Mitas code
ROAD – ELITE											
SYRINX	Elite	25-622	700 x 25C	Racing Pro	127	SMC		800	75	240	5-10950461
SYRINX	Elite	23-622	700 x 23C	Racing Pro	127	SMC		800	66	230	5-10950231
SYRINX	Standard	25-622	700 x 25C	Classic	22	RC		800	71	430	5-10950453
SYRINX	Standard	23-622	700 x 23C	Classic	22	RC		800	63	430	5-10950211









X-ROAD ELITE

EASY-HARD PACKED TERRAIN/ROADS



Tread pattern suitable both for riding in easy, hardpacked terrain and on the roads. Finer and smaller tread figures, especially in the central part of the tyre, ensure low rolling resistance bring joy from fast and comfortable riding.

Tyre name	Performance level	ETRTO	Alternative size	Construction	TPI	Thread compound	Technology	Inflating (kPa)	Load (kg)	Weight (g)	Mitas code
GRAVEL											
X-ROAD NEW	Elite	42-622	700 x 40C	TUBELESS SUPRA	127	CRX	 	500	122	470	5-10967390
X-ROAD	Elite	40-622	700 x 38C	TUBELESS SUPRA	127	CRX	 	550	118	455	5-10967325
X-ROAD	Elite	33-622	700 x 33C	TUBELESS SUPRA	127	CRX	 	600	100	330	5-10952860





X-FIELD ELITE

MODERATE - RATHER SOLID TERRAIN



The most versatile tread pattern designed for moderate and rather solid terrain. Thread figures with optimal height and allocation provide low rolling resistance, speed, traction and effective braking. X-FIELD is the right choice for most CX tracks.

Tyre name	Performance level	ETRTO	Alternative size	Construction	TPI	Thread compound	Technology	Inflating (kPa)	Load (kg)	Weight (g)	Mitas code
GRAVEL											
X-FIELD	Elite	33-622	700 x 33C	TUBELESS SUPRA	127	CRX	 	600	100	350	5-10952861




X-SWAMP ELITE

WET – MUDDY – SOFT TERRAIN



The roughest pattern designed for wet, muddy or soft terrain. The layout and size of knobs provide perfect traction, solid bike handling and tread self-cleaning function.

Tyre name	Performance level	ETRTO	Alternative size	Construction	TPI	Thread compound	Technology	Inflating (kPa)	Load (kg)	Weight (g)	Mitas code
GRAVEL											
X-SWAMP	Elite	33-622	700 x 33C	TUBELESS SUPRA	127	CRX	 	600	100	360	5-10952862





CHEETAH



OCELOT



GRIPPER

Tyre name	Performance level	ETRTO	Alternative size	Construction	TPI	Thread compound	Technology	Inflating (kPa)	Load (kg)	Weight (g)	Mitas code
GRAVEL											
CHEETAH NEW	Standard	40-622	700 x 38C	Classic	22	BC		550	113	730	5-10967386
OCELOT NEW	Standard	40-622	700 x 38C	Classic	22	BC		550	113	700	5-10967387
GRIPPER	Standard	35-622		Classic	22	BC		600	98	610	5-10951222



CITY & TREKKING



31



ELECTRON

CITY E-BIKES

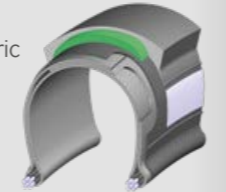
- eBike ready
- E-PROTEC 360°
- E-BIKE ANTIPUNCTURE SYSTEM

Tyre pattern specifically designed for city e-bikes providing increased traction on sides of the tread that brings better grip in curves. Applied E-PROTEC 360° technology increases puncture resistance, riding comfort and ensures exceptional safety under reduced visibility conditions. The Tyre is certified for e-bikes up to 50 km/h (EHK75).

Tyre name	Performance level	ETRTO	Alternative size	Construction	TPI	Thread compound	Technology	Inflating (kPa)	Load (kg)	Weight (g)	Colour Thread/Sidewall	Mitas code
CITY & TREKKING												
ELECTRON	Elite	47-622	28 x 1,75; 700 x 45C	DYNAMIC	29	OC	E-PROTEC 360°	450	135	800		5-10967306
ELECTRON	Elite	47-622	28 x 1,75; 700 x 45C	Classic	22	OC	E-APS	450	135	910		5-10967379
ELECTRON	Elite	37-622	700 x 35C	DYNAMIC	29	OC	E-PROTEC 360°	600	113	670		5-10967305
ELECTRON	Elite	37-622	700 x 35C	Classic	22	OC	E-APS	600	113	660		5-10967380

50 km/h

- Extremely durable rubberized bead-to-bead fabric
- Twisted Steel Wire (2x2)
- Puncture protection rubber belt (1,5 mm)
- Highly visible 10 mm reflective stripe



CITYHOPPER

CITY E-BIKES

- eBike ready
- ANTIPUNCTURE SYSTEM

As the name CITYHOPPER suggests, it is the right choice for high-quality surfaces in urban areas. The casing profile provides a comfortable ride and dampens road surface bumps. Some versions of the casing offer additional protection and safety features. All tyres with antipuncture system are E-BIKE ready.



Tyre name	Performance level	ETRTO	Alternative size	Construction	TPI	Thread compound	Technology	Inflating (kPa)	Load (kg)	Weight (g)	Colour Thread/Sidewall	Mitas code
CITY & TREKKING												
CITYHOPPER NEW	Elite	57-559	26 x 2,25	Classic	22	BC	APS RS	382	133	870		5-10967409
CITYHOPPER NEW	Elite	57-559	26 x 2,25	Classic	22	BC	APS RS	382	133	870		5-10967410
CITYHOPPER	Elite	52-622	28 x 2,00	Classic	22	BC	APS RS	420	141	860		5-10952440
CITYHOPPER	Elite	52-622	28 x 2,00	Classic	22	BC	APS RS	42	141	890		5-10952446
CITYHOPPER	Elite	52-622	28 x 2,00	Classic	22	BC	APS RS	420	141	880		5-10952442
CITYHOPPER NEW	Standard	57-559	26 x 2,25	Classic	22	BC		382	133	880		5-10967407
CITYHOPPER NEW	Standard	57-559	26 x 2,25	Classic	22	BC		382	133	880		5-10967408
CITYHOPPER	Standard	52-622	28 x 2,00	Classic	22	BC		420	141	910		5-10952441
CITYHOPPER	Standard	52-622	28 x 2,00	Classic	22	BC		420	141	810		5-10952447
CITYHOPPER	Standard	52-622	28 x 2,00	Classic	22	BC		420	141	810		5-10952443
CITYHOPPER	Standard	57-559	26 x 2,25	Classic	22	BC		380	133	910		5-10951856



FLASH

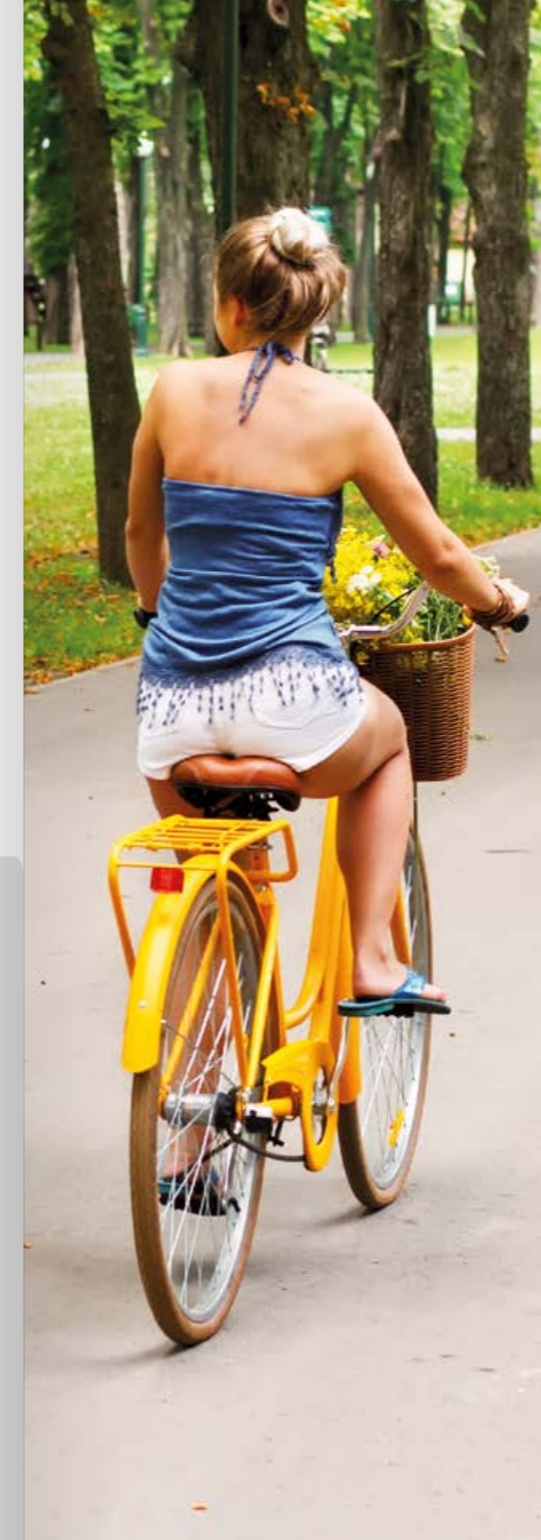
BEAT CITY TRAFFIC



Do you want to get through city traffic in a flash? FLASH is the ideal choice to beat city traffic. The tread structure provides low rolling resistance and good adhesion on both dry and wet surfaces. FLASH is available in many sizes and 2 colour combinations. All tyres with antipuncture system are E-BIKE ready.

Tyre name	Performance level	ETRTO	Alternative size	Construction	TPI	Thread compound	Technology	Inflating (kPa)	Load (kg)	Weight (g)	Colour Thread/Sidewall	Mitas code
CITY & TREKKING												
FLASH	Elite	47-622	28 x 1,75; 700 x 45C	Classic	22	BC	▲ APS ▲ RS	450	127	880	■ ■	5-10952229
FLASH	Elite	47-622	28 x 1,75; 700 x 45C	Classic	29	OC	▲ ST 3 mm ▲ RS	450	135	1000	■ ■	5-10952228
FLASH	Elite	42-622	700 x 40C	Classic	22	BC	▲ APS ▲ RS	500	115	790	■ ■	5-10952202
FLASH	Elite	42-622	700 x 40C	Classic	29	OC	▲ ST 3 mm ▲ RS	500	122	970	■ ■	5-10952205
FLASH	Elite	37-622	700 x 35C	Classic	22	BC	▲ APS ▲ RS	600	106	670	■ ■	5-10951319
FLASH	Elite	37-622	700 x 35C	Classic	29	OC	▲ ST 3 mm ▲ RS	600	113	770	■ ■	5-10951316
FLASH	Elite	28-622	700 x 28C	Classic	22	BC	▲ APS ▲ RS	700	78	450	■ ■	5-10950489
FLASH	Elite	47-559	26 x 1,75 x 2	Classic	22	BC	▲ APS ▲ RS	450	115	740	■ ■	5-10952157
FLASH	Elite	47-559	26 x 1,75 x 2	Classic	29	OC	▲ ST 3 mm ▲ RS	450	122	900	■ ■	5-10952168
FLASH	Elite	50-507	24 x 1,90	Classic	29	OC	▲ ST 3 mm ▲ RS	450	107	880	■ ■	5-10967268

KIDS



BLACK BROWN

Tyre name	Performance level	ETRTO	Alternative size	Construction	TPI	Thread compound	Technology	Inflating (kPa)	Load (kg)	Weight (g)	Colour Thread/Sidewall	Mitas code
CITY & TREKKING												
FLASH	Elite	47-406	20 x 1,75 x 2	Classic	29	OC	▲ ST 3 mm ▲ RS	450	80	700	■ ■	5-10967265
FLASH	Standard	47-622	28 x 1,75; 700 x 45C	Classic	22	BC		450	127	820	■ ■	5-10952225
FLASH	Standard	47-622	28 x 1,75; 700 x 45C	Classic	22	BC	▲ RS	450	127	820	■ ■	5-10952224
FLASH	Standard	47-622	28 x 1,75; 700 x 45C	Classic	22	BC	▲ RS	450	127	780	■ ■	5-10952150
FLASH	Standard	42-622	700 x 40C	Classic	22	BC		500	115	740	■ ■	5-10952213
FLASH	Standard	42-622	700 x 40C	Classic	22	BC	▲ RS	500	115	740	■ ■	5-10952717
FLASH	Standard	42-622	700 x 40C	Classic	22	BC	▲ RS	500	115	740	■ ■	5-10967298
FLASH	Standard	37-622	700 x 35C	Classic	22	BC		600	106	610	■ ■	5-10951306
FLASH	Standard	32-622	700 x 32C	Classic	22	BC		650	90	550	■ ■	5-10950805
FLASH	Standard	28-622	700 x 28C	Classic	22	BC		700	78	430	■ ■	5-10950476
FLASH	Standard	37-590	26 x 13/8	Classic	22	BC		600	101	620	■ ■	5-10951196
FLASH	Standard	47-559	26 x 1,75 x 2	Classic	22	BC		450	115	750	■ ■	5-10952175
FLASH	Standard	47-559	26 x 1,75 x 2	Classic	22	BC		450	115	700	■ ■	5-10952139
FLASH	Standard	47-559	26 x 1,75 x 2	Classic	22	BC	▲ RS	450	115	750	■ ■	5-10952166
FLASH	Standard	40-559	26 x 1,50	Classic	22	BC		550	102	640	■ ■	5-10951412
FLASH	Standard	50-507	24 x 1,90	Classic	22	BC		450	107	680	■ ■	5-10967267
FLASH	Standard	47-406	20 x 1,75 x 2	Classic	22	BC		450	80	560	■ ■	5-10967264

KIDS

KIDS

KIDS



HOOK

CITY TREK

- ANTIPUNCTURE SYSTEM
- STOP THORN
- eBike ready

The universal tread pattern of the HOOK tyre is designed for riding on poor and unpaved surfaces. The almost smooth central part of the tread ensures less rolling resistance when riding on the road. Some tyres are also manufactured with other protective and safety features. All tyres with antipuncture system are E-BIKE ready.

Tyre name	Performance level	ETRTO	Alternative size	Construction	TPI	Thread compound	Technology	Inflating (kPa)	Load (kg)	Weight (g)	Colour Thread/Sidewall	Mitas code
CITY & TREKKING												
HOOK	Elite	42-622	700 x 40C	Classic	22	BC	▲ APS ▲ RS	500	115	790	■ ■	5-10952187
HOOK	Elite	37-622	700 x 35C	Classic	22	BC	▲ APS ▲ RS	600	106	570	■ ■	5-10951323
HOOK	Elite	37-622	700 x 35C	Classic	29	OC	▲ ST 3 mm ▲ RS	600	113	770	■ ■	5-10951334
HOOK	Standard	40-635	28 x 1 1/4	Classic	22	BC		550	115	730	■ ■	5-10951605
HOOK	Standard	32-630	27 x 1 1/4	Classic	22	BC		650	91	550	■ ■	5-10950936
HOOK	Standard	42-622	700 x 40C	Classic	22	BC		500	115	740	■ ■	5-10952718
HOOK	Standard	37-622	700 x 35C	Classic	22	BC		600	106	610	■ ■	5-10951344
HOOK	Standard	32-622	700 x 32C	Classic	22	BC		650	90	550	■ ■	5-10950800
HOOK	Standard	37-590	26 x 1 3/8	Classic	22	BC		600	101	620	■ ■	5-10951202
HOOK	Standard	40-584	26 x 1 1/2	Classic	22	BC		550	106	670	■ ■	5-10951509



SHIELD

CITY TREK

- ANTIPUNCTURE SYSTEM
- eBike ready

The SHIELD casing is designed for poorer quality and unpaved surfaces, but the smooth centreline of the tread provides lower rolling resistance even when riding on the road. The tread is fitted with an integrated (Clever Face) wear identifier that alerts the cyclist to the degree of tread wear with a smiley-shaped mouth. Some tyres are manufactured with additional protection and safety features. Tyres with antipuncture system are E-BIKE ready.

Tyre name	Performance level	ETRTO	Alternative size	Construction	TPI	Thread compound	Technology	Inflating (kPa)	Load (kg)	Weight (g)	Colour Thread/Sidewall	Mitas code
CITY & TREKKING												
SHIELD	Elite	47-406	20 x 1,75 x 2	Classic	22	BC	▲ APS ▲ RS	320	70	630	■ ■	5-10951957 KIDS
SHIELD	Standard	40-622	700 x 38C	Classic	22	BC	😊	550	113	700	■ ■	5-10951574
SHIELD	Standard	47-559	26 x 1,75 x 2	Classic	22	BC	😊	450	115	750	■ ■	5-10952164
SHIELD	Standard	40-559	26 x 1,50	Classic	22	BC	😊	550	102	650	■ ■	5-10951408
SHIELD	Standard	47-507	24 x 1,75 x 2	Classic	22	BC	😊	350	91	730	■ ■	5-10967247 KIDS
SHIELD	Standard	47-406	20 x 1,75 x 2	Classic	22	BC	😊	320	70	600	■ ■	5-10952277 KIDS

😊 CLEVER FACE



Tyre name	Performance level	ETRTO	Alternative size	Construction	TPI	Thread compound	Technology	Inflating (kPa)	Load (kg)	Weight (g)	Mitas code
CITY & TREKKING											
GRIPPER	Standard	42-622	700 x 40C	Classic	22	BC		500	115	710	5-10952192
LANDMARK	Standard	40-622	700 x 38C	Classic	22	BC		550	113	730	5-10951580
SYRINX	Standard	40-559	26 x 1,50	Classic	22	BC		550	102	560	5-10951406
SEPIA	Elite	42-622	700 x 40C	Classic	22	BC	▲ APS ▲ RS	500	115	760	5-10952197
SEPIA	Standard	42-622	700 x 40C	Classic	22	BC		500	115	750	5-10952719
SEPIA	Standard	47-559	26 x 1,75 x 2	Classic	22	BC		450	115	750	5-10952141



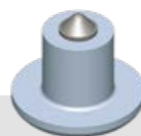
Tyre name	Performance level	ETRTO	Alternative size	Construction	TPI	Thread compound	Technology	Inflating (kPa)	Load (kg)	Weight (g)	Mitas code
CITY & TREKKING											
WALRUS	Standard	47-622	28 x 1,75; 700 x 45C	Classic	22	BC		280	96	820	5-10952704
WALRUS	Standard	47-559	26 x 1,75 x 2	Classic	22	BC		450	115	730	5-10952701
WALRUS	Standard	47-507	24 x 1,75 x 2	Classic	22	BC		280	80	680	5-10952709
WALRUS	Standard	47-406	20 x 1,75 x 2	Classic	22	BC		450	86	560	5-10952714
WALRUS	Standard	47-355	18 x 1,75 x 2	Classic	22	BC		320	62	550	5-10951841
WALRUS	Standard	47-305	16 x 1,75 x 2	Classic	22	BC		280	51	460	5-10951851
WALRUS	Standard	47-203	12 1/2 x 1,75 x 2 1/4	Classic	22	BC		250	34	320	5-10967339
WALRUS	Standard	47-152	10 x 1,75 x 2	Classic	22	BC		380	34	280	5-10950104
COBRA	Standard	50-559	26 x 1,90	Classic	22	BC		450	126	760	5-10951279
COBRA	Standard	40-406	20 x 1,50	Classic	22	BC		450	76	460	5-10951880
MISTRAL	Standard	40-635	28 x 1 1/2	Classic	22	BC		280	77	830	5-12950408
FLIPPER	Standard	37-622	700 x 35C	Classic	22	BC		600	106	580	5-10951349

KIDS KIDS KIDS KIDS KIDS KIDS KIDS KIDS

ICE & SNOW



Mitas Winter tyres offer the highest quality of studs. The carbide tips in an aluminum body ensure the lowest possible weight and the highest wear resistance. The studs can last several thousands of kilometers. The tips get gently abraded and slightly pushed into the tread knobs while riding but this has no influence neither on the riding comfort or the stud performance. It is recommended that new tyres are allowed a 40 - 50km "bedding in" period in order to allow the studs to settle in their housings. No heavy braking or aggressive riding should be performed during this first period.



The carbide tips in an aluminum body

The effectiveness of studs depends on their total number and allocation in the tread pattern. Generally, the best performance can be achieved on packed snow and frozen tarmac. On the contrary, in deep snow or on cobblestones the effect is minimal. The performance of studded tires is significantly influenced by the inflation pressure. Higher pressure reduces the noise when riding on hard surfaces whilst lower pressures increase the effectiveness of the studs. Performance and adhesion limits of winter tyres should be approached with caution. No recommendations or descriptions can advise on these boundaries. The use of studded bicycle tyres is not limited by legislation.



GRIPPER ICE

ELITE

ANTIPUNCTURE SYSTEM



FROSTER

ELITE

ANTIPUNCTURE SYSTEM

Tyre name	Performance level	ETRTO	Alternative size	Construction	TPI	Thread compound	Technology	Inflating (kPa)	Load (kg)	Weight (g)	Mitas code
ICE & SNOW											
GRIPPER ICE (272 studs)	Elite	42-622	700 x 40C	Classic	22	SWC	▲ APS ▲ RS	500	115	890	5-10952723
GRIPPER ICE (136 studs)	Elite	42-622	700 x 40C	Classic	22	SWC	▲ APS ▲ RS	500	115	850	5-10952722
FROSTER (240 studs)	Elite	47-559	26 x 1,75 x 2	Classic	22	SWC	▲ APS ▲ RS	450	115	860	5-10952133
FROSTER (120 studs)	Elite	47-559	26 x 1,75 x 2	Classic	22	SWC	▲ APS ▲ RS	450	115	830	5-10952132
FROSTER JP (100 studs)	Elite	47-507	24 x 1,75 x 2	Classic	22	SWC	▲ APS ▲ RS	450	105	770	5-10967307

TYRES COMPOUNDS

CRX

CARBON RACE EXTREME LIGHT

Rubber compound on active carbon black basis. Such provides high structural strength, enhanced abrasion resistance, excellent adhesion, grip and low drag characteristics.

CRX Dual – compound where the side figures are low-rebound for higher adhesion.

OC

OPTIMAL

Compound with higher resistance against abrasion.

Optimal balance of abrasiveness and lifetime determines this compound for the tire of middle user's level – amateur sport and training.

SWC

SILICA WINTER

Special tread compound developed for riding in winter conditions.

By combining several types of rubber, an optimal ratio between long life and good adhesion was found. Active carbon black provides outstanding mechanical properties while Silica ensures ideal hardness at low temperatures. The use of antidegradants provide resistance to specific snow and salt conditions.

EDC

ENDURO DUAL

Unique combination of two compounds – well-proven CRX compound in the base and at the center of tread pattern and low-rebound compound DEAD for side pattern figures. Such blend providing high structural strength and enhanced resistance to abrasion in the center as well as excellent adhesion and traction of side figures is optimal for extreme riding in harsh and ragged terrain.

DEAD

DOWNHILL EXTREME ADHESIVE

Special low-reflective compound with high structural strength and admixture of activated silica.

With its excellent adhesive features is predestinated for extreme sport usage in demanding and rugged terrain.

SMC

SILICA MEDIUM

Special tread compound with admixture of activated silica distinguishing itself by low drag, good adhesive properties, long durability.

Intended for sportive usage in universal conditions. This compound shows very stable properties at lower temperatures.

BC

BASIC

Standard tread black-carbon compound with a long service life and good riding properties; it is calculated for daily usage in universal conditions.

RC

ROAD

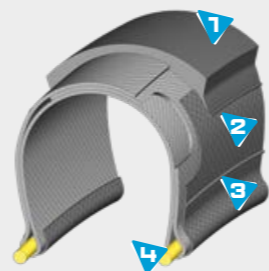
Special tread compound with higher adhesion developed for tarmac and urban surfaces.



TYRES TECHNOLOGY

TEXTRA

An extremely durable rubberized fabric with high-density polymer threads, protecting the carcass of tyres. Its excellent elasticity characteristics together with light weight maintain outstanding riding properties of our Elite level tyres. This technology ultimately increases resistance against cuts and abrasion to provide both superior reliability and high performance.

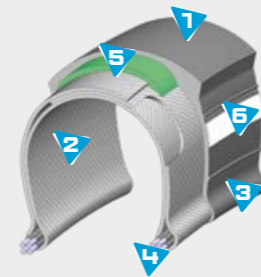


- 1 Tread
- 2 Carcass
- 3 An extremely durable rubberized fabric
- 4 Aramide Bead

E-APS

E-BIKE ANTIPIERCURE SYSTEM

Approx. 1,5 mm thick rubber buffer produced from a special compound, placed between tread and carcass. Thus it provides enhanced puncture and cut-off protection with increased rigidity and strength of the tires crown. Such properties together with advanced adhesion, tire life and low rolling resistance make it a great choice for e-bikes.



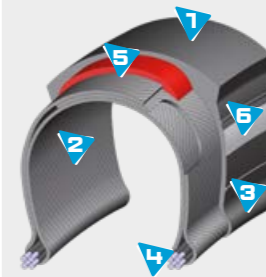
E-BIKE ANTIPIERCURE SYSTEM

- 1 Tread
- 2 Carcass
- 3 Rubber Sidewall
- 4 Twisted Steel Wire (2x2)
- 5 Puncture protection rubber belt
- 6 Reflex Stripe

APS

ANTIPIERCURE SYSTEM

A band of approx. 1 mm thick special rubber placed between the tread and the carcass decreases the possibility of having a puncture (high structural strength and hardness). It increases the rigidity and strength of the tire crown, and decreases the tire drag while maintaining the adhesive force.



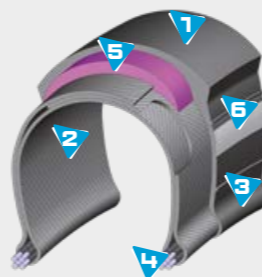
ANTIPIERCURE SYSTEM

- 1 Tread
- 2 Carcass
- 3 Rubber Sidewall
- 4 Twisted Steel Wire (2x2)
- 5 Puncture protection rubber belt
- 6 Reflex Stripe

ST

STOP THORN

Ultimate puncture protection made of 3 mm thick rubber. The special compound is placed between tread and carcass. It increases stiffness and strength in the crown area. Advanced resistance against puncture and 2 times longer service life comparing to a Classic tire by application together with Long Way construction thanks reinforced sidewalls and Optimal compound.

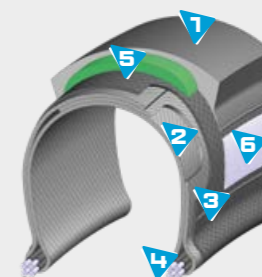


STOP THORN

- 1 Tread
- 2 Carcass
- 3 Reinforced Sidewall
- 4 Twisted Steel Wire (2x2)
- 5 Puncture protection rubber belt
- 6 Reflex Stripe

E-PROTEC 360°

Ultimate puncture protection made of 1.5 mm thick rubber. The special compound is placed between tread and carcass. Due to its properties high structural strength and hardness, it prevents punctures or cut-offs. Enhanced protection is provided by additional TEXTRA layer. Applied 10 mm wide reflective stripe brings intensive light reflection from all angles, thus increasing safety.



E-PROTEC 360°

- 1 Tread
- 2 Carcass
- 3 An extremely durable bead-to-bead rubberized fabric
- 4 Twisted Steel Wire (2x2)
- 5 Puncture protection rubber belt (1,5 mm)
- 6 Highly visible 10 mm reflective stripe

TYRES CONSTRUCTION

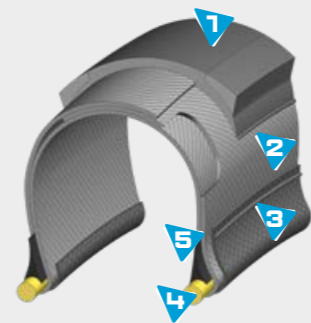
DH SUPRA MAX

Carcass: 127 TPI | drum technology (OLT)
Sidewall: skinwall (SW)
Bead: reinforced aramid bead (AR) + bead sealing protection; rubber stiffening wing

CHARACTERISTICS:
 Tubeless specification with increased carcass resistance; Optimized Grip; stable riding in difficult terrain even at lower pressure.

Extreme protection against „Snake Bite“ and sidewall punctures and enhanced puncture resistance of tyre crown.

- 1 Reinforced tread
- 2 Carcass
- 3 An extremely durable rubberized fabric
- 4 Reinforced aramide Bead
- 5 Rubber stiffening wing



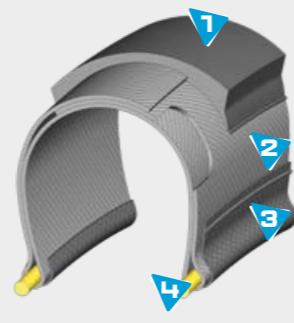
TUBLESS SUPRA

Carcass: 127 TPI | drum technology (OLT)
Sidewall: skinwall (SW)
Bead: aramid bead (A) + bead sealing protection

CHARACTERISTICS:
 Tubeless specification with high-density sidewalls protection; Optimized compound for durability and low rolling resistance while maintaining excellent level of grip in all conditions. A light and long-lasting option.

Extreme protection against „Snake Bite“ and sidewall punctures and enhanced puncture resistance of tyre crown.

- 1 Tread
- 2 Carcass
- 3 An extremely durable rubberized fabric
- 4 Aramide Bead

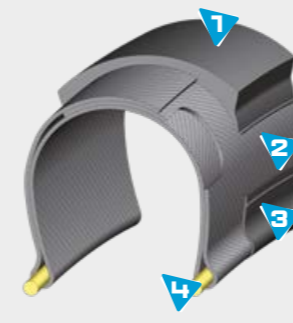


RACING PRO

Carcass: 127 TPI | drum technology (OLT)
Sidewall: skinwall (SW)
Bead: aramid bead (A)

CHARACTERISTICS:
 low weight; low drag; high inflation range; easy storage

- 1 Tread
- 2 Carcass
- 3 Anti-abrasion Strip
- 4 Aramide Bead

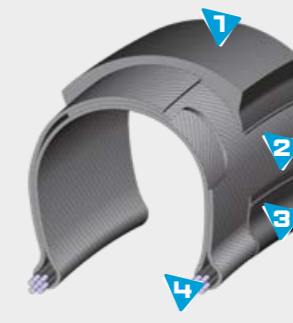


DYNAMIC

Carcass: 29 TPI | drum technology (OLT)
Sidewall: skinwall (SW)
Bead: twisted steel wire (TW)

CHARACTERISTICS:
 low weight; higher pressure; high driving comfort

- 1 Tread
- 2 Carcass
- 3 Anti-abrasion Strip
- 4 Twisted Steel Wire (2x2)

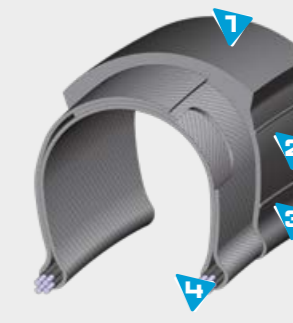


CLASSIC

Carcass: 22 or 29 TPI | drum technology (OLT)
Sidewall: gumwall (GW)
Bead: reinforced twisted steel wire (TWR) / wire (W) / twisted steel wire (TW)

CHARACTERISTICS:
 reliability; resistance to wear; good riding properties; higher inflating pressure

- 1 Tread
- 2 Carcass
- 3 Rubber Sidewall
- 4 Twisted Steel Wire (2x2)

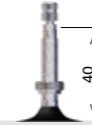


TUBES

COMPOUNDS FOR TUBES

LHC LIGHT COMPOUND compound with a higher structural strength	SBC SPECIAL BASIC COMPOUND Compound for special sizes	BSC BASIC STANDARD COMPOUND standard compound for classic tubes
---	---	---

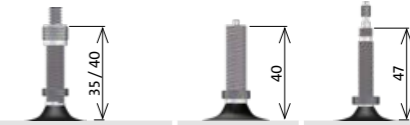
Marking	Name	Wall thickness	Material	Cap
LH	Light	0,60	LHC	silver
CL	Classic	0,90	BSC	black
SSS	Slug - SELF SEALANT	0,90	SBC	green
TS	Tubeless Supra valve	valve	valve	blue
X	Extreme	1,20	SBC	red
MD	Moped	1,30	BSC	black



Nominal Diameter (mm)	Short Dimension	ETRTO	Alternative Size	Weight [g]	AV35	AV40	AV48	DV35	DV40	DV48	FV47	FV60	FV80	IV40	
					CLASSIC				BSC 0,9 mm						
622 / 635	700	23/28-622/635	700 x 23C / 28C	97											
406	20"	28/47-406	20 x 1.10 - 1.75	92		5-10340020	5-10340023		5-10340021					5-10340022	
507	24"	28/47-507	24 x 1.10 - 1.75	112		5-10340030	5-10340031		5-10340032					5-10340033	
559	26"	28/47-559	26 x 1.10 - 1.75	123		5-10340040	5-10340044		5-10340041		5-10340042			5-10340043	
584 / 597	26 / 27,5"	28/47-584/597	26 / 27,5 x 1.10 - 1.75	128		5-10340050			5-10340051		5-10340052			5-10340053	
622 / 635	28"	28/47-622/635	28 x 1.10 - 1.75	136		5-10340060	5-10340061		5-10340062	5-10340064	5-10340063	5-10340067		5-10340066	
254 / 288	14"	32/47-254/288	14 x 1.25 - 1.75	65	5-10340080										
305	16"	32/47-305	16 x 1.25 - 1.75	72	5-10340090						5-10340091			5-10340092	
355	18"	32/47-355	18 x 1.25 - 1.75	82	5-10340100		5-10340102	5-10340101							
305	16"	47/62-305	16 x 1.75 - 2.45	104	5-10340130		5-10340133	5-10340131						5-10340132	
406	20"	47/62-406	20 x 1.75 - 2.45	133		5-10340140	5-10340144		5-10340141					5-10340143	
507	24"	47/62-507	24 x 1.75 - 2.45	163		5-10340150	5-10340151		5-10340152					5-10340154	
559	26"	47/62-559	26 x 1.75 - 2.45	178		5-10340160	5-10340162		5-10340163		5-10340164			5-10340166	
584	27,5"	47/62-584	27,5 x 1.75 - 2.45	185		5-10340170	5-10340176		5-10340172		5-10340173			5-10340175	
584	27,5"	62/75 - 584	"PLUS" size 27,5 x 2.45 - 3.00"	249		5-10301340					5-10301343				
622 / 635	28 / 29"	47/62-622/635	28 / 29 x 1.75 - 2.45	196		5-10340180	5-10340182		5-10340183	5-10340186	5-10340184			5-10340187	
622 / 635	28 / 29"	62/75 - 622	"PLUS" size 29 x 2.45 - 3.00"	264		5-10300040					5-10300047				
					LIGHT		LHC 0,6 mm								
622	700	23/28-622	700 x 23C	75							5-10340001	5-10340002	5-10340003		
622	28 / 29"	47/57-622	29 x 1.75 - 2.30	126										5-10340110	
					EXTREME		SBC 1,2 mm								
559	26"	54/75 - 559	26 x 2.10 - 3.00	330										5-10303017	
584	27,5"	54/75 - 584	27,5 x 2.10 - 3.00	343										5-10303018	
622	28 / 29"	54/75 - 622	29 x 2.10 - 3.00	364										5-10303020	
					SLUG - SELF SEALANT		BSC 0,9 mm								
559	26"	47/62 - 559	26 x 1.75 - 2.45	288		5-10340161					5-10340165				
584	27,5"	47/62 - 584/597	27,5 x 1.75 - 2.45	295		5-10340171					5-10340174				
622	28 / 29"	47/62 - 622/635	28 / 29 x 1.75 - 2.45	306		5-10340181					5-10340185				

GAADI TUBES

GAADI® is a linear bicycle tube made of high-quality compound and having two ends. Available for all wheel sizes from 20 to 28 inches, it can be delivered with a Dunlop valve (DV), Scloverand / French (FV), Italian valve (IV) or with a Schröder valve (SV).



Nominal Diameter (mm)	ETRTO	Alternative Marking	Weight (average)	DV35	DV40	SV40	FV47	VERSION	
								AFM	OEM
GAADI TUBES									
406	50 / 54 - 406	20 x 1,90 - 2,10	152	5-10317001			5-10317002	5-10317000	111 150
507	40 / 47 - 507	24 x 1,60 - 1,75	176	5-10317004			5-10317005	5-10317003	111 150
	50 / 54 - 507	24 x 1,90 - 2,10	180	5-10317007			5-10317008	5-10317006	111 150
559	40 / 47 - 559	26 x 1,60 - 1,75	191		5-10317010		5-10317011	5-10317009	111 150
	50 / 54 - 559	26 x 1,90 - 2,10	195		5-10317013		5-10317014	5-10317012	111 150
584 / 597	32 / 37 - 584 / 597	x	157		5-10317025		5-10317026	5-10317027	111 150
	40 / 47 - 584 / 597	27,5 x 1,60 - 1,75	201		5-10317028		5-10317029	5-10317030	111 150
	50 / 54 - 584 / 597	27,5 x 1,90 - 2,10	205		5-10317031		5-10317032	5-10317033	111 150
622 / 635	32 / 37 - 622 / 635	700 x 32 / 35C	165		5-10317016		5-10317017	5-10317015	111 150
	40 / 47 - 622 / 635	700 x 38 / 45C	209		5-10317019		5-10317020	5-10317018	111 150
	50 / 54 - 622	28 / 29 x 1,90 - 2,10	214		5-10317022		5-10317023	5-10317021	111 150



SAFETY & INFLATING



RS – REFLEX STRIPE

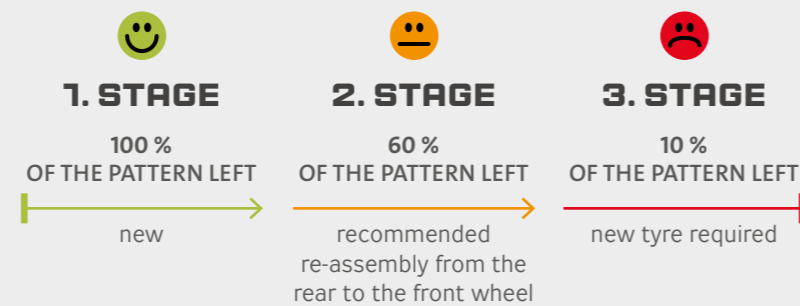
Excellent properties of reflective stripe provide a high light reflection during dusk and dawn, night, fog, rain and low light conditions for the whole tyre life.

Mitas bicycle tyres with the reflective carry world-wide valid certificate E4 8R 002058 ensuring the quality of such tyre production according to the standards and parameters. The reflective stripe on the sidewall is a distinctive safety esthetic element increasing the utility and value of the product.



CLEVER FACE

Tyre Abrasion Integrated Identifier



INFLATING – CONVERSION TABLE

CONVERSION kPa to psi, bar, atm, Torr																		
kPa	160	190	200	250	280	320	350	380	400	450	500	550	560	600	630	650	700	800
psi	23.2	27.6	29.0	36.3	40.6	46.4	50.8	55.1	58.0	65.3	72.5	79.8	81.2	87.0	91.4	94.3	101.5	116.0
bar	1.6	1.9	2.0	2.5	2.8	3.2	3.5	3.8	4.0	4.5	5.0	5.5	5.6	6.0	6.3	6.5	7.0	8.0
atm	1.6	1.9	2.0	2.5	2.8	3.2	3.5	3.8	3.9	4.4	4.9	5.4	5.5	5.9	6.2	6.4	6.9	7.9
Torr	1200	1425	1500	1875	2100	2400	2625	2850	3000	3375	3750	4125	4200	4500	4725	4875	5250	6000

ACCESSORIES



TSS – TUBELESS SEALANT

Special liquid sealant latex-based is intended mainly for tyres of TUBELESS SUPRA construction in order to create tubeless system.



ACCESSORIES

Product Name	Specifications	Mitas code
TUBELESS SEALANT 150 ml		7-001632
TUBELESS SEALANT 1000 ml		5-12265111-000
TUBELESS SEALANT 5000 ml		5-12265112-000
TUBELESS SUPRA KIT 26"	set for one bike	5-10320000-000
TUBELESS SUPRA KIT 27,5"	set for one bike	5-10332000-000
TUBELESS SUPRA KIT 29"	set for one bike	5-10331000-000
TUBELESS SUPRA VALVES	set for one bike	5-10327000-000

TYRES
Mitas



Mitas Bicycle Tyres and Tubes
Trelleborg Bohemia, a.s.
Českých bratří 338
547 36 Náchod, Czech Republic

Your Distributor/ Dealer:

For more information about
MITAS bike tyres and tubes visit:

RIDEMITAS.COM

  [RIDEMITAS](#)

[#RIDEMITAS](#)
[#MITASTYRES](#)